



RELIABLE TESTING TO GROW BUSINESS



**FOOD  
RESEARCH  
AND  
ANALYSIS  
CENTRE**



# ABOUT EINFRAC

## **Ebro India Food Research and Analysis Centre was established in 2014.**

Ebro India Food Research and Analysis Centre (EINFRAC) is the Independent Unit of Ebro India.

It's a NABL accredited (as per ISO 17025: 2017), EIC and APEDA approved laboratory in the field of chemical testing for pesticides, mycotoxins, heavy metals, nutritional analysis and quality parameters in food products.

EINFRAC is specialized in rice, paddy and wheat testing.

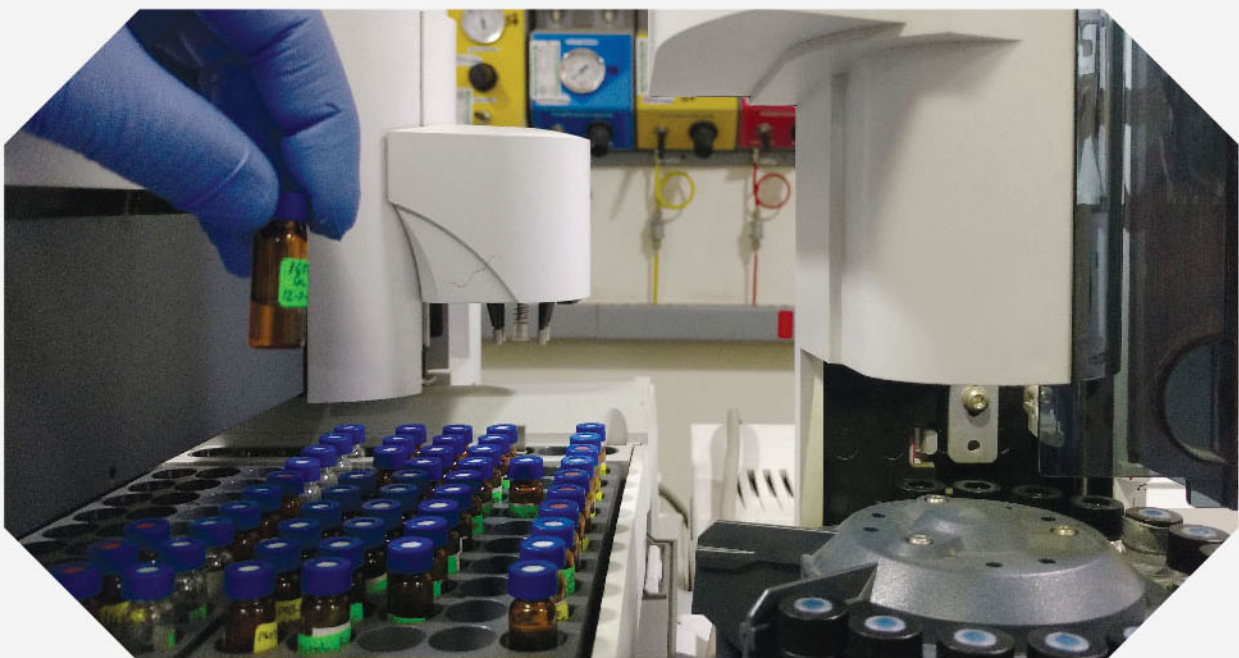
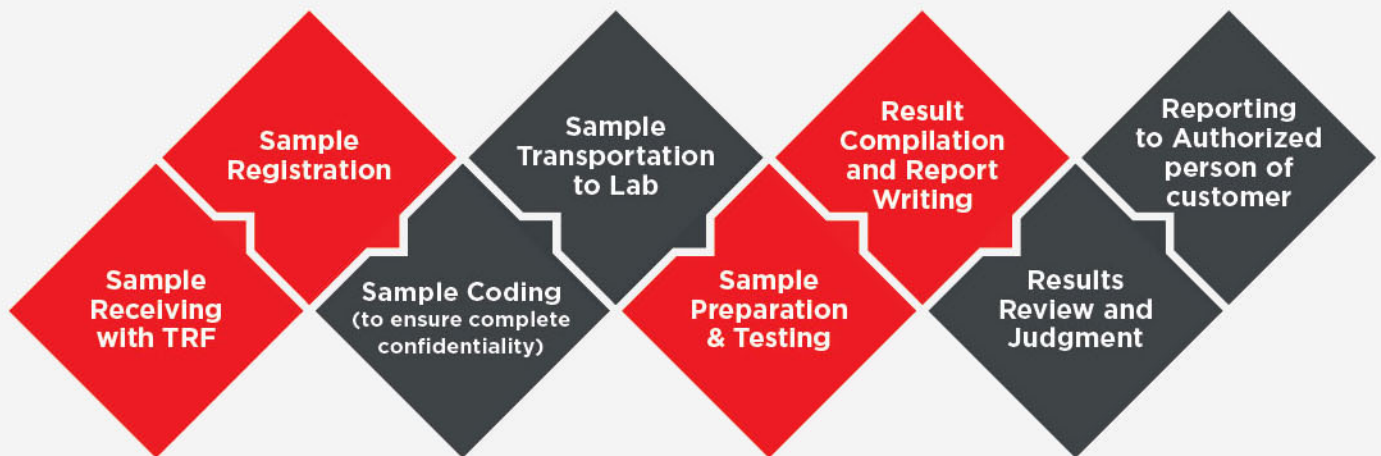
The objective of the laboratory is to achieve the customer satisfaction in terms of results accuracy, reliability and timely reporting.

The Laboratory is being run and managed by the technical and experienced professionals having a wide experience in various food product testing.

# CERTIFICATIONS



# TESTING PROCESS



\*In Process

# PRODUCTS TESTED

CEREAL & CEREAL PRODUCTS (PADDY & RICE)



OIL & OIL SEEDS

PULSES



WHEAT & WHEAT PRODUCTS



BAKERY & CONFECTIONERY



NUT, NUT PRODUCTS & RAISINS



CATTLE FEED & PET FOOD

SPICES & CONDIMENTS



INFANT FOOD



HONEY & HONEY PRODUCTS



WATER

# CAPABILITIES

<b>PESTICIDES</b> more than 250 compounds	<b>AFLATOXIN</b> B1, B2 & G1 & G2	<b>OCHRATOXIN</b> A	<b>HEAVY METALS</b>	<b>CROP CUTTING/RAW MATERIAL/PRE- SHIPMENT SAMPLING</b>
<b>LOADING CONTROL</b>	<b>GLUTEN</b>	<b>GLUTEN INDEX</b> (Flour Strength)	<b>FAT &amp; FIBER</b>	<b>PROTEIN</b>
<b>ASH</b>	<b>MOISTURE</b>	<b>GRANULATION/PARTICLE</b> size (150 to 500 micron)	<b>FALLING NUMBER</b> (Damage Starch)	
<b>DYES</b>	<b>SEDIMENTATION</b>	<b>COLOUR</b> (L,a,b)	<b>ADULTERATION</b>	

## PHYSICAL PARAMETERS

(Varietal Identification, Milling Yield, Moisture content and Whiteness etc.)

## WHY EINFRACTION ?

- EIA & APEDA approved lab
- ISO 17025/2017
- EIA & APEDA Authorized Sampler
- Expertise in rice, paddy & wheat products
- More than 250 pesticides accredited under NABL
- State-of-the-art Technology
- Qualified Scientists
- World Class Infrastructure
- Lowest Turnaround Time
- Competitive price
- Regular participation in international PT programs to deliver accurate results
- Free sample pickup within 30km radius



## WHEN EINFRACTION ?

- At the time of sourcing to ensure the right product is sourced
- Before production to address the specific country requirement
- At the time of R&D for business growth/decision making
- At the time of shipment to ensure shipment of the right product

# THE COUNTRY SPECIFIC TESTS

## FOR RICE EXPORTER /MILLER

COUNTRY	REQUIREMENT	EINFRAC COMPLIANCE
<b>EU</b>	Pesticides	Yes
	Aflatoxin B1, B2, G1 & G2	Yes
	Ochratoxin A	Yes
	Heavy Metals	Yes
	Sampling	Yes
<b>US</b>	Pesticides	Yes
	Aflatoxin B1, B2, G1 & G2	Yes
	Ochratoxin A	Yes
	Heavy Metals	Yes
	Sampling	Yes
<b>SFDA</b>	Pesticides	In process
	Aflatoxin B1, B2, G1 & G2	In process
	Ochratoxin A	In process
	Heavy Metals	In process
<b>FSSAI - INDIA</b>	Pesticides	Yes
	Aflatoxin B1, B2, G1 & G2	Yes
	Ochratoxin A	Yes
	Heavy Metals	Yes
	Physical Parameters	Yes
<b>CODEX</b>	Pesticides	Yes

## FOR WHEAT EXPORTER /MILLER

INDUSTRY	REQUIREMENT	EINFRAC COMPLIANCE
<b>BREAD/ BISCUIT, PASTA, MACRONI, FLOUR MILLS</b>	Moisture	Yes
	Protein	Yes
	Ash	Yes
	Acid Insoluble Ash	Yes
	Alcoholic Acidity	Yes
	Wet/Dry Gluten	Yes
	Gluten Index	Yes
	Fiber	Yes
	Fat and FFA	Yes
	Damaged Starch	Yes
	Sedimentation value	Yes
	Falling Number	Yes
	Colour	Yes
	Particle size (Serve Test)	Yes
	Pesticide	Yes
	Heavy Metal	Yes
Mycotoxins	Yes	

## FOR ANIMAL / CATTLE FEED

INDUSTRY	REQUIREMENT	EINFRAC COMPLIANCE
<b>CATTLE FEED, ANIMAL FOOD, PET FOOD, RICE BRAN</b>	Moisture	Yes
	Protein	Yes
	Ash	Yes
	Acid Insoluble Ash	Yes
	Fat and FFA	Yes
	Fiber	Yes
	Energy	Yes
	Carbohydrate	Yes

# EINFRAC

(An independent unit of Ebro India)

Village - Takhana, GT road, Taraori,  
Distt. Karnal - 132116.

Contact: +91 8222954510

E-mail: [info@einfrac.in](mailto:info@einfrac.in)

website: [www.einfrac.in](http://www.einfrac.in)

